

Drop-in Isolators

Part Number: KTDI202M-30

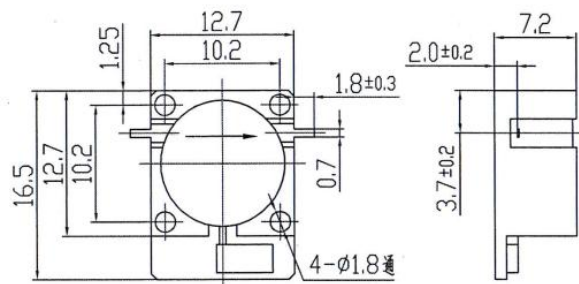
Key Features

- Frequency Range: 1.8GHz-3.8GHz
- Low Insertion Loss, High Isolation
- Small Size, Good Performance
- Wide Operating Temperature Range : -40°C~+85°C
- Commercial, Military and Space Applications

Electrical Specifications at Room (25°C±5°C) Temperature

Part Number	Freq. Range (GHz)	Relative Bandwidth	Insertion Loss Max. (dB)	Isolation Min. (dB)	VSWR Max.	Reverse Power (W)	Connector Type
KTDI202M-30	1.8 - 3.8	5%	0.5	20	1.25	30	TAB
KTDI202M-30	2.9 - 3.1	full	0.5	18	1.30	30	TAB

Mechanical Dimensions (mm)



HOW TO ORDER

